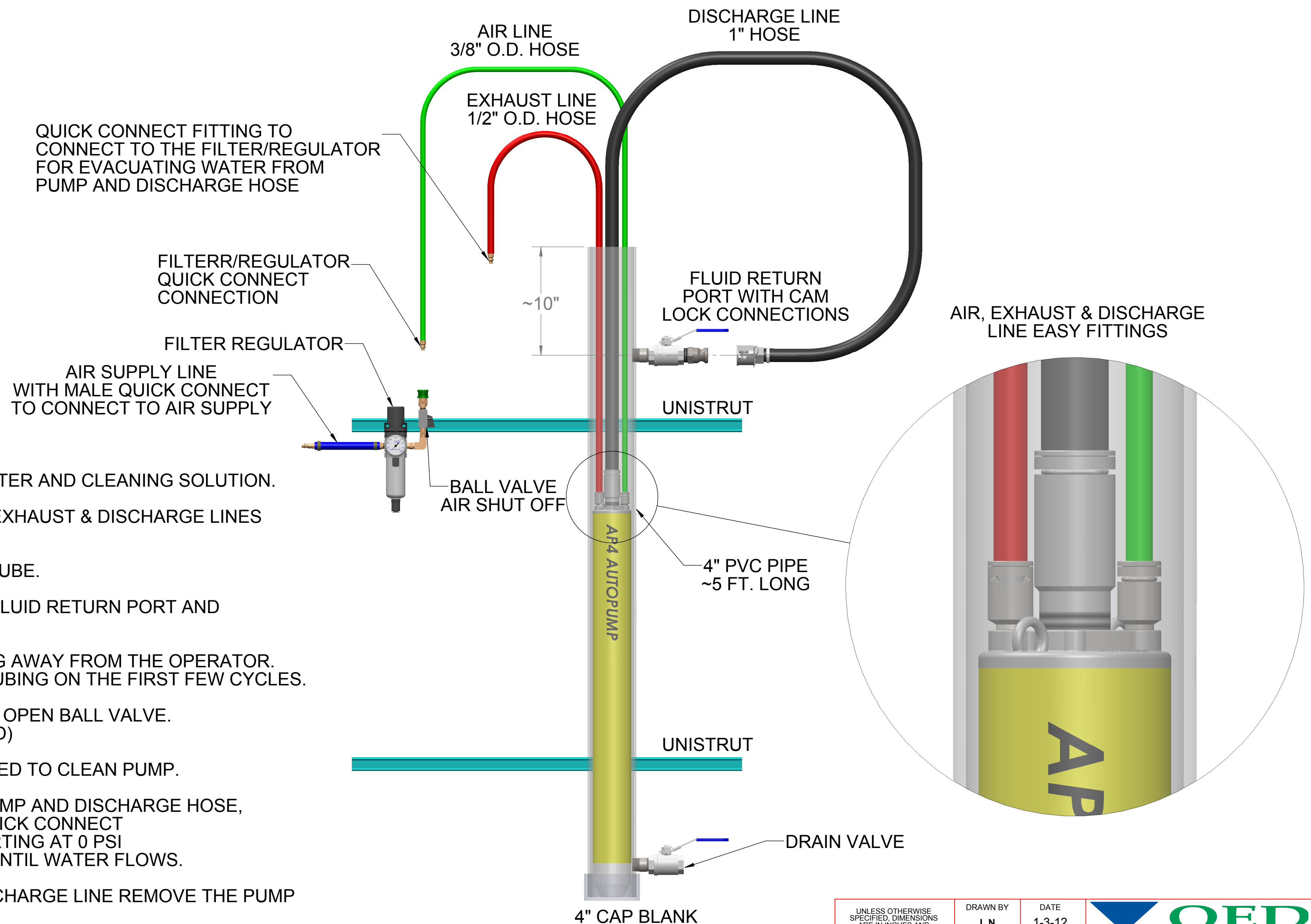


THE INFORMATION CONTAINED IN THIS DRAWING IS THE SOLE PROPERTY OF Q.E.D. ENVIRONMENTAL ANY REPRODUCTION IN PART OR WHOLE WITHOUT THE WRITTEN PERMISSION OF Q.E.D. ENVIRONMENTAL IS PROHIBITED.


REVISIONS

REV.	DESCRIPTION	ECO #	DRAWN BY	CHECKED BY	DATE
------	-------------	-------	----------	------------	------



INSTRUCTIONS:

1. CLOSE OFF DRAIN AND ADD WATER AND CLEANING SOLUTION.
2. CONNECT AUTO PUMP TO AIR, EXHAUST & DISCHARGE LINES USING "EASY FITTINGS".
3. INSERT PUMP INTO CLEANING TUBE.
4. ATTACH DISCHARGE HOSE TO FLUID RETURN PORT AND OPEN BALL VALVE.
5. EXHAUST HOSE TO BE POINTING AWAY FROM THE OPERATOR. SOME SPRAY MAY COME OUT TUBING ON THE FIRST FEW CYCLES.
6. SET REGULATOR TO 10 PSI AND OPEN BALL VALVE. (MINIMUM PRESSURE REQUIRED)
7. CYCLE PUMP FOR TIME REQUIRED TO CLEAN PUMP.
8. TO EVACUATE WATER FROM PUMP AND DISCHARGE HOSE, ATTACH FILTER/REGULATOR QUICK CONNECT TO PUMP EXHAUST HOSE. STARTING AT 0 PSI BRING PRESSURE UP SLOWLY UNTIL WATER FLOWS.
9. ONCE AIR COMES OUT THE DISCHARGE LINE REMOVE THE PUMP WITH THE AIR ON.
10. WITH THE PUMP REMOVED FROM THE CLEANING TUBE TURN THE REGULATOR BALL VALVE OFF.
11. DISCONNECT THE REGULATOR FROM THE EXHAUST LINE. CLOSE THE DISCHARGE BALL VALVE AND DISCONNECT THE DISCHARGE LINE FROM THE CAM LOCK. THEN REMOVE EASY FITTINGS AIR, EXHAUST & DISCHARGE LINES FROM THE PUMP.

UNLESS OTHERWISE SPECIFIED, DIMENSIONS ARE IN INCHES AND INCLUDE PLATING REMOVE ALL BURRS	DRAWN BY <b>L.N.</b>	DATE <b>1-3-12</b>	 <b>QED</b> Environmental Systems 6155 JACKSON ROAD, ANN ARBOR, MI. 48103
	CHECKED BY <b>DHE</b>	DATE <b>1-3-12</b>	
TOLERANCES XX +/- .01 FRACT +/- 1/64 XXX +/- .005 ANGLES +/- 1/2 OTHER TOLERANCES AS SPECIFIED	APPROVED BY <b>D.C.</b>	DATE <b>1-3-12</b>	TITLE <b>CLEANING STAND FOR AUTOPUMPS SINGLE</b>
NEXT ASSY -	MATERIAL -	DWG. NO. <b>Cleaning Fixture</b>	REV. -
USED ON -	FINISH -	SCALE <b>1:12</b>	SHEET OF