

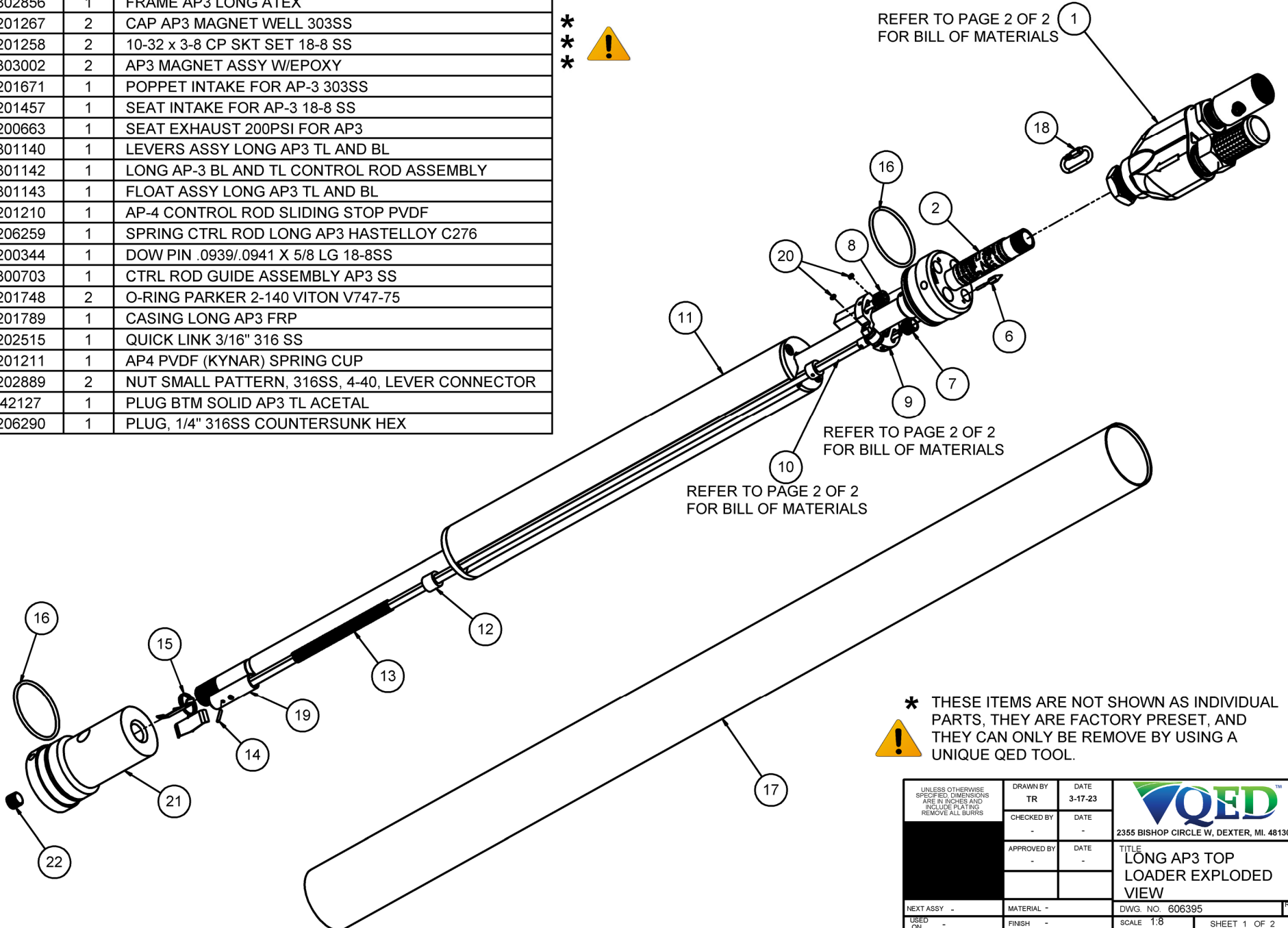
THE INFORMATION CONTAINED IN THIS DRAWING IS THE SOLE PROPERTY OF Q.E.D. ENVIRONMENTAL. ANY REPRODUCTION IN PART OR WHOLE WITHOUT THE WRITTEN PERMISSION OF Q.E.D. ENVIRONMENTAL IS PROHIBITED.


ITEM	PART #	QTY.	DESCRIPTION
1	301382	1	WYE ASSY W/303 DISCHARGE CV AP3 TL
2	302856	1	FRAME AP3 LONG ATEX
3	201267	2	CAP AP3 MAGNET WELL 303SS
4	201258	2	10-32 x 3-8 CP SKT SET 18-8 SS
5	303002	2	AP3 MAGNET ASSY W/EPOXY
6	201671	1	POPPET INTAKE FOR AP-3 303SS
7	201457	1	SEAT INTAKE FOR AP-3 18-8 SS
8	200663	1	SEAT EXHAUST 200PSI FOR AP3
9	301140	1	LEVERS ASSY LONG AP3 TL AND BL
10	301142	1	LONG AP-3 BL AND TL CONTROL ROD ASSEMBLY
11	301143	1	FLOAT ASSY LONG AP3 TL AND BL
12	201210	1	AP-4 CONTROL ROD SLIDING STOP PVDF
13	206259	1	SPRING CTRL ROD LONG AP3 HASTELLOY C276
14	200344	1	DOW PIN .0939/.0941 X 5/8 LG 18-8SS
15	300703	1	CTRL ROD GUIDE ASSEMBLY AP3 SS
16	201748	2	O-RING PARKER 2-140 VITON V747-75
17	201789	1	CASING LONG AP3 FRP
18	202515	1	QUICK LINK 3/16" 316 SS
19	201211	1	AP4 PVDF (KYNAR) SPRING CUP
20	202889	2	NUT SMALL PATTERN, 316SS, 4-40, LEVER CONNECTOR
21	42127	1	PLUG BTM SOLID AP3 TL ACETAL
22	206290	1	PLUG, 1/4" 316SS COUNTERSUNK HEX


*
*
* 

301089A

REFER TO PAGE 2 OF 2 FOR BILL OF MATERIALS

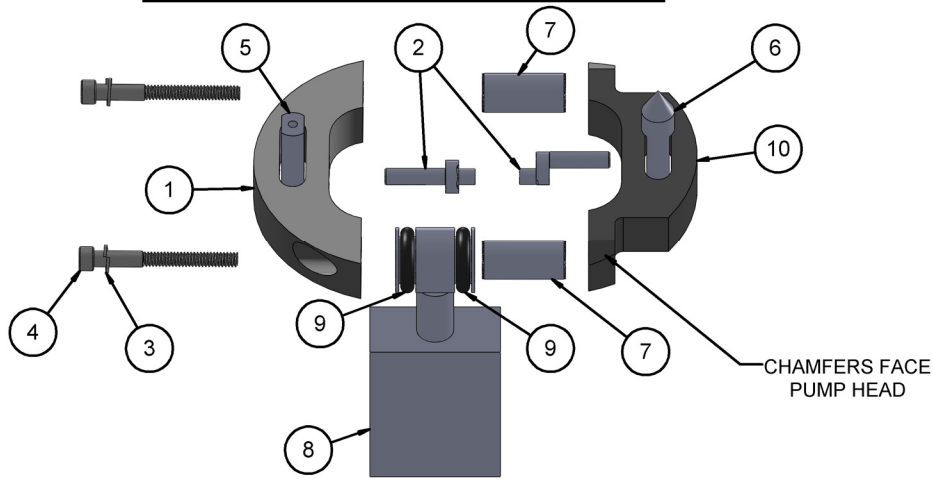


*  THESE ITEMS ARE NOT SHOWN AS INDIVIDUAL PARTS, THEY ARE FACTORY PRESET, AND THEY CAN ONLY BE REMOVE BY USING A UNIQUE QED TOOL.

UNLESS OTHERWISE SPECIFIED DIMENSIONS ARE IN INCHES AND INCLUDE PLATING REMOVE ALL BURRS	DRAWN BY	DATE	 2355 BISHOP CIRCLE W, DEXTER, MI. 48130
	TR	3-17-23	
	CHECKED BY	-	
	APPROVED BY	DATE	TITLE
	-	-	LONG AP3 TOP LOADER EXPLODED VIEW
NEXT ASSY -	MATERIAL -	DWG. NO. 606395	REV. C
USED ON -	FINISH -	SCALE 1:8	SHEET 1 OF 2

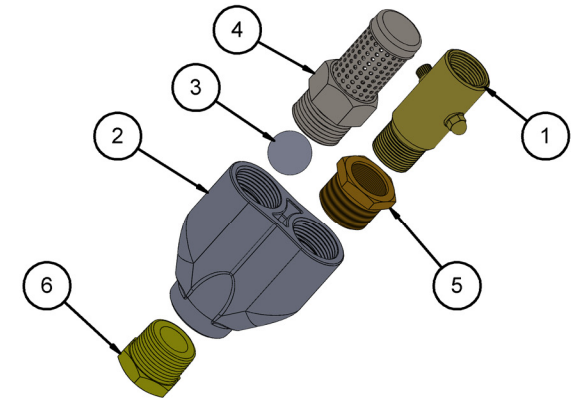
THE INFORMATION CONTAINED IN THIS DRAWING IS THE SOLE PROPERTY OF Q.E.D. ENVIRONMENTAL. ANY REPRODUCTION IN PART OR WHOLE WITHOUT THE WRITTEN PERMISSION OF Q.E.D. ENVIRONMENTAL IS PROHIBITED.

301140 - AP3 LONG LEVERS ASSEMBLY



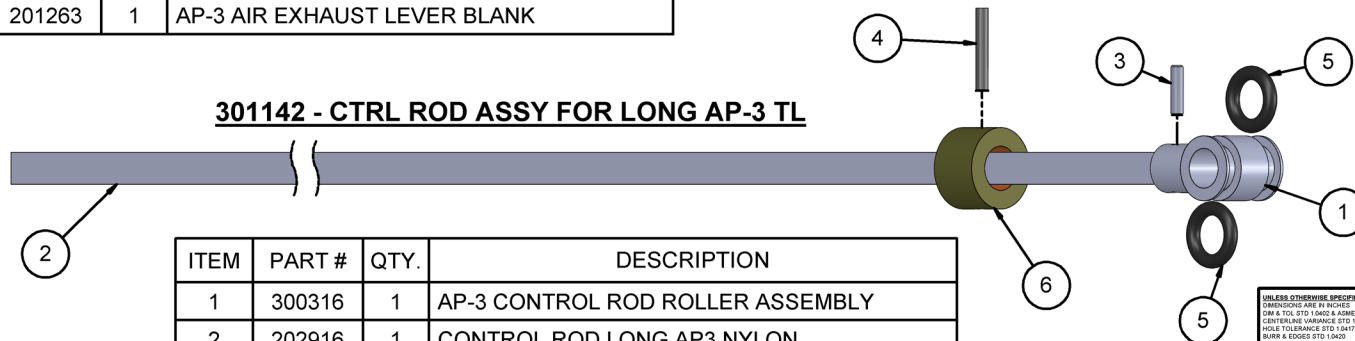
ITEM	PART #	QTY.	DESCRIPTION
1	201264	1	LEVER INT AP3 ACETAL
2	201197	2	POPPET CRANK PIVOT PIN AP3
3	201632	2	S.S. LEVER SCREW LOCK WASHER
4	201631	2	18-8 S.S. LEVER SCREW
5	201283	1	303 S.S. INTAKE POPPET CONNECTOR
6	201282	1	POPPET EXH AP3 303SS
7	201266	2	BUSHING ROLLER AP3 304SS
8	300402	1	COUNTERWEIGHT ASSY LONG AP-3 S
9	200496	2	O-RING PARKER 2-109 VITON V747-75
10	201263	1	AP-3 AIR EXHAUST LEVER BLANK

301139 - WYE ASSY TL AP3 ACETAL




ITEM	PART #	QTY.	DESCRIPTION
1	300720	1	CV 3/4 MXF W/BOLT PIN BRASS
2	301777	1	WYE IMPACT RESISTANT PINNED
3	201744	1	BALL, 1" TEFLON
4	301383	1	SCREEN AP4 TL FLUID INTAKE 316SS
5	37219	1	BUSHING 1" MPT X 3/4" FPT BRASS
6	201746	1	BUSHING AP3 WYE ASSEMBLY

301142 - CTRL ROD ASSY FOR LONG AP-3 TL



ITEM	PART #	QTY.	DESCRIPTION
1	300316	1	AP-3 CONTROL ROD ROLLER ASSEMBLY
2	202916	1	CONTROL ROD LONG AP3 NYLON
3	205102	1	DOWEL PIN 3/32 X 3/8 18-8 SS
4	200344	1	DOW PIN .0939/.0941 X 5/8 LG 18-8SS
5	200496	2	O-RING PARKER 2-109 VITON V747-75
6	201209	1	STOP UPPER CTRL ROD AP4/AP3 PVDF

<small>UNLESS OTHERWISE SPECIFIED: DIMENSIONS ARE IN INCHES DIM & TOL STD 1 (ASME Y14.5-1994) CENTLINE VARIANCE STD 1 (ASME Y14.5-1994) HOLE TOLERANCE STD 1 (ASME Y14.5-1994) SURFACE FINISH STD 1 (ASME Y14.5-1994) SURFACE ROUGHNESS STD 1 (ASME Y14.5-1994) O-RING (PARKER) STD 1 (ASME Y14.5-1994)</small>	DRAWN BY TR	DATE 3-17-23	 2355 BISHOP CIRCLE W, DEXTER, MI. 48130
	CHECKED BY -	DATE -	
	APPROVED BY -	DATE -	TITLE LONG AP3 TOP LOADER EXPLODED VIEW
NEXT ASSY USED ON	MATERIAL FINISH	DWG. NO. 606395	REV C SCALE 1:1 SHEET 2 OF 2