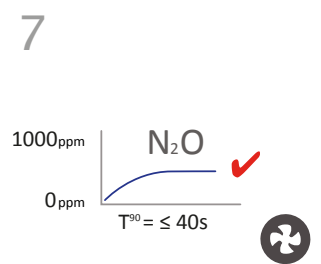
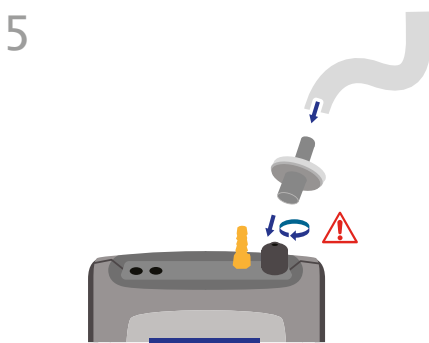
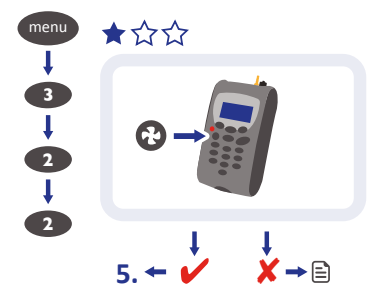
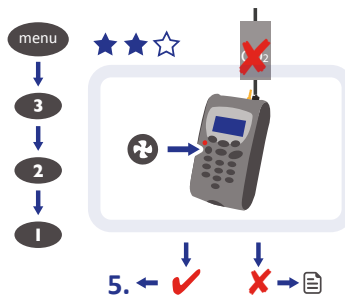
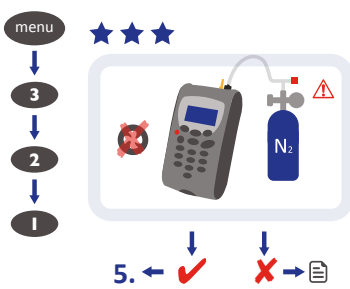


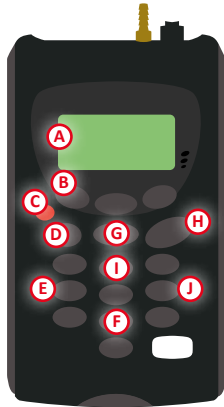
4 0.0 N₂O ✓



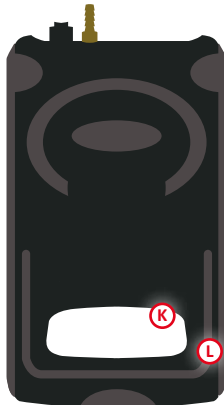


G200 QUICK START GUIDE

www.geotechuk.com/products/g200



- A** Main read screen
- B** Soft-keys
- C** On/off key
- D** Pump key
- E** Key 4- scroll left
- F** Key 8- scroll down
- G** Menu key
- H** Enter key
- I** Key 2- scroll up
- J** Key 6- scroll right



- K** Serial number
- L** Kick stand



- A** Gas outlet port used to exhaust the gas.
- B** Gas inlet point used to attach the sample tube and filter in order to take the gas reading.
- C** USB cable attachment point. Used to connect the analyser to a PC via a USB cable to download data.
- D** Mains battery charger point. Used to attach the mains charger to the analyser for charging.

ICON	DESCRIPTION
	Battery charge state
	< 1 hour remaining
	Battery charging
	Charged
	Pump running
	Pump stalled (backlight turns red)
	Alarm set
	Alarm active (backlight turns red)
	USB connected to PC (flickers when transferring data)
	Logging mode active (flashes when memory nearly full)
	Service due (every 12 months)
	Service overdue
	Fault/repair
	Waiting

Note: A red backlight is displayed if the pump is stalled or the alarm is activated. For further information, please refer to Operating Manual sections on Alarms and Flow Fail.

To view the complete operating manual, please go to the **LITERATURE** section at www.geotechuk.com/products/g200