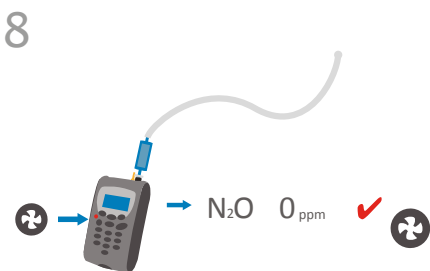
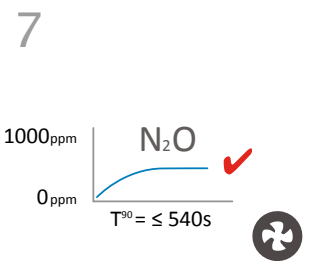
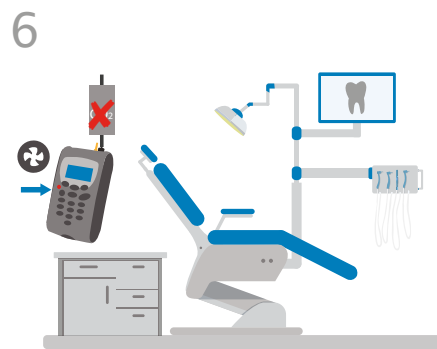
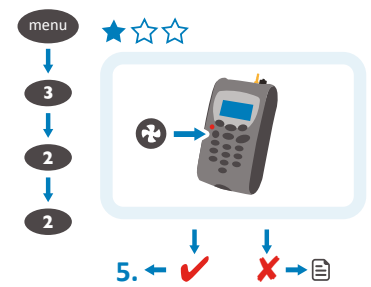
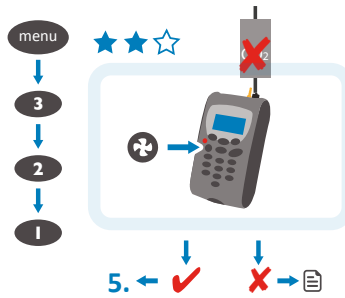
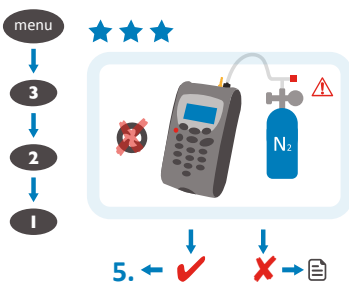
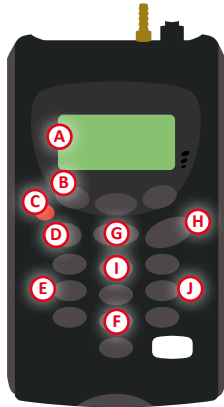
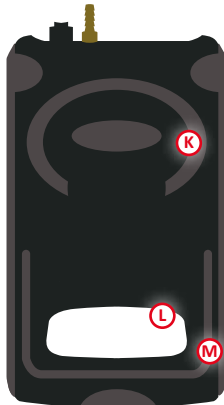


4 0.0 N₂O ✓





- A** Main read screen
- B** Soft-keys
- C** On/off key
- D** Pump key
- E** Key 4- scroll left
- F** Key 8- scroll down
- G** Menu key
- H** Enter key
- I** Key 2- scroll up
- J** Key 6- scroll right



- K** Moisture removal tube
- L** Serial number
- M** Kick stand



- A** Gas outlet port used to exhaust the gas.
- B** Gas inlet point used to attach the sample tube and filter in order to take the gas reading.
- C** USB cable attachment point. Used to connect the analyser to a PC via a USB cable to download data.
- D** Mains battery charger point. Used to attach the mains charger to the analyser for charging.

ICON	DESCRIPTION
	Battery charge state
(Flashing)	< 1 hour remaining
(Flashing)	Battery charging
	Charged
	Pump running
(Flashing)	Pump stalled (backlight turns red)
	Alarm set
(Flashing)	Alarm active (backlight turns red)
	USB connected to PC (flickers when transferring data)
	Logging mode active (flashes when memory nearly full)
	Temperature probe(s) connected
	Humidity probe connected
(Flashing)	Service due (every 12 months)
	Service overdue
	Fault/repair
	Waiting

Note: A red backlight is displayed if the pump is stalled or the alarm is activated. For further information, please refer to Operating Manual sections on Alarms and Flow Fail.

To view the complete operating manual, please go to the **LITERATURE** section at www.geotechuk.com/g200